

# Antica

## ready colors

*Antica, in particular, gives a finish such as wrought iron to any support in wood, metal, plastic, zinc and many others described in the data sheet.*

*The colours of the present colour card are purely indicative and they do not constitute an absolute corresponding reference. The print process, the light and the use can modify the original tones of the colour card.*



Antica GG  
Base solvente  
13800002



Antica GM  
Base solvente  
13820003



Grafite pro  
0417



### Antica Decorative antirust enamel to obtain an antiquing finish

*Decorative antirust enamel to obtain an antiquing finish, as wrought iron. Protective and waterproof qualities, it gives to surfaces the appearance of antique iron. Formulated with bright high quality micaceous oxides.*

**Dilution** By brush and roller max 1% with 9120.0004, by air-spray max 4% with 9120.0004

**Yield** Theoretical coverage for each coat 9 - 10 m<sup>2</sup>/l



M | Cg | Cls | G | F | LL | L



# Antica



1503/4



1501/4



1501/2



1501/3



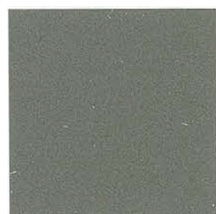
1501/1



150313



1503/1



1503/2



1511/3



1511/4



1505/3



1511/1



1505/2



1505/1



1511/2



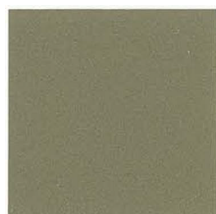
1509/1



1507/3



1509/2



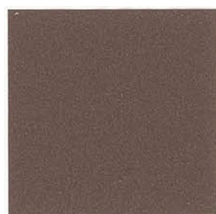
1505/4



1507/4



1509/2



1509/4



1507/1



1509/3